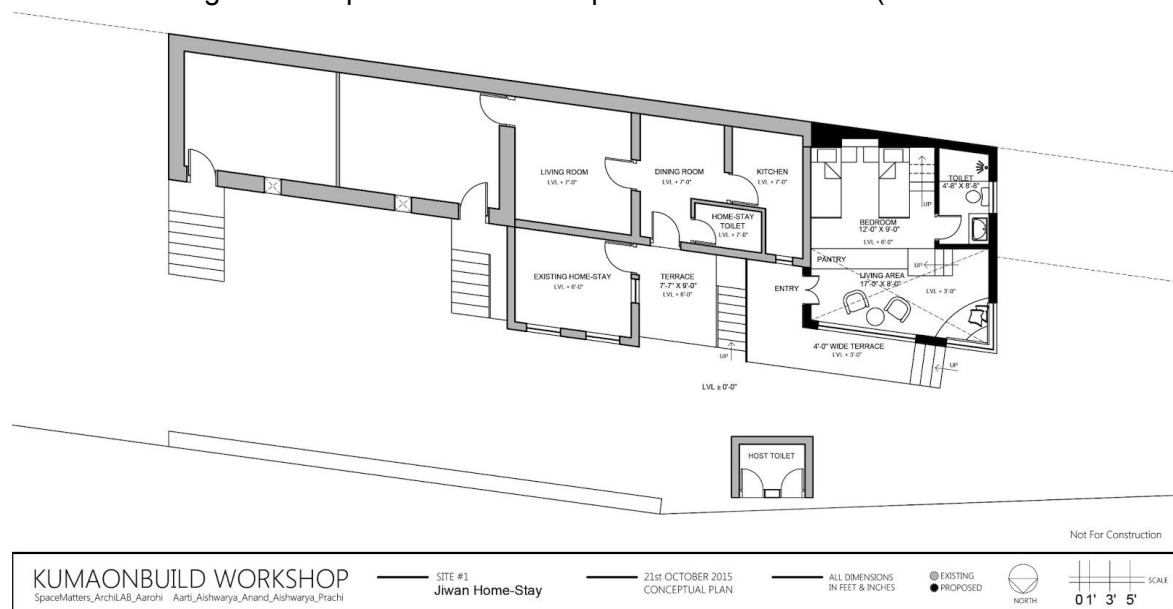


Hello all!

Site #1, Chachaji's Home-stay is on hold for the moment. Site#2, Jiwan's home-stay hopes to go into construction by month end. Following is an update on its design development. We will be grateful if you can take out some time to mull this over and shoot back with your thoughts and ideas!

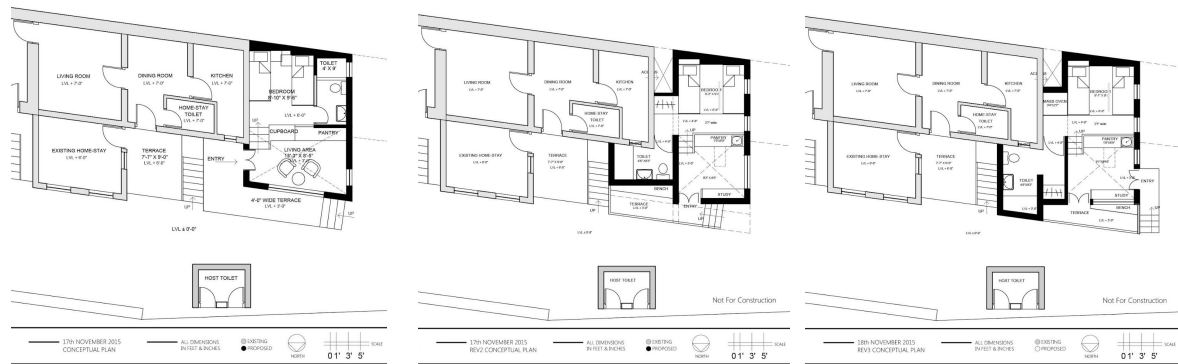
On the issue of the effect of construction activity in such close vicinity of a naulah, Pranay has advised that the building should be contained within 14feet from the hosts' existing house. The designs developed in the workshop use 17feet+230mm (external wall thickness).



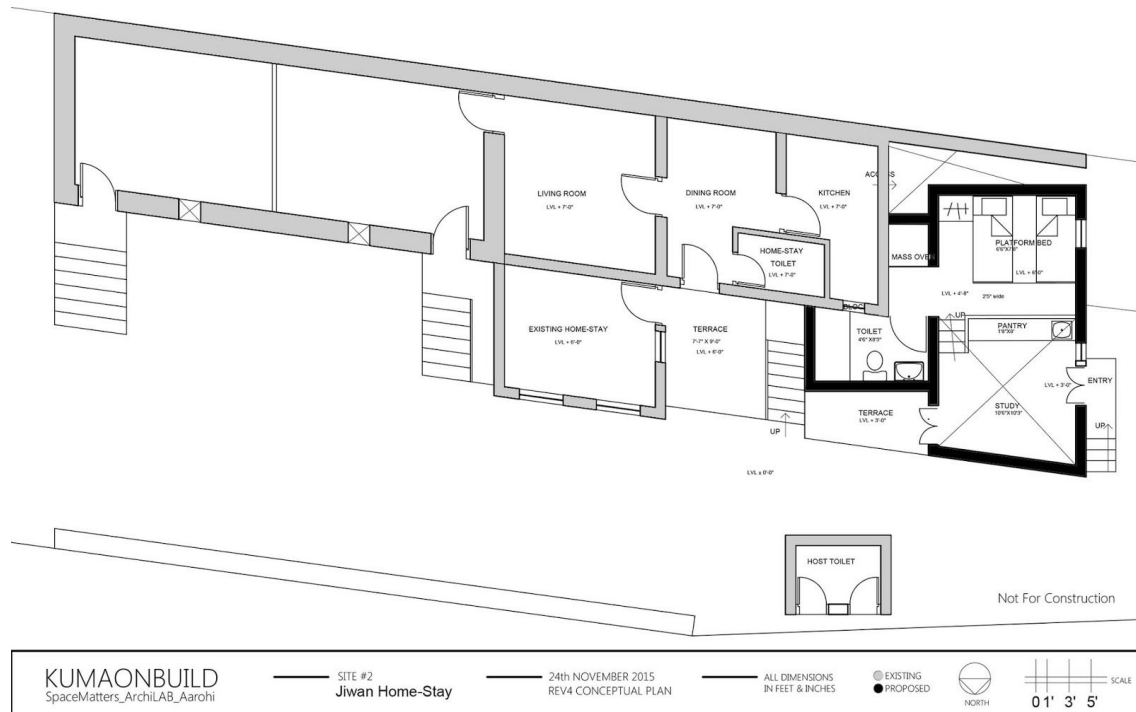
Hence we, while staying true to the vision conceived in the workshop, have re-organised the scheme to fit within the redrawn site edges. A mass oven has also been added to the home-stay.

*{For your reference, you can find high-res images in the folder containing this document.}*

Following are the three schematic plans- Rev0 (above) was developed in the workshop, Rev1 is the same scheme squished to the narrower site, with a relocated toilet. We have chosen to let go of the space on top of the toilet space in Rev1 in favour of a compact and cosy (and cheaper to build) volume that opens over the sunken living room. In Rev2, the toilet has been moved, occupying part of the terrace, so as to have a more spacious bedroom. In Rev3, the toilet has been rotated in order to accommodate a mass oven to heat the platform bed.



At this stage, it was decided to extend the footprint of the home-stay one foot further, (totalling 15feet or 4500mm from the wall of the hosts' kitchen) in order to create a more spacious layout- in particular, a wider terrace was desired. This led to the creation of Rev4, what we consider the most evolved- where the bathroom is rotated back to its position in Rev2 and a generous volume is allowed for study/lounge/pantry.

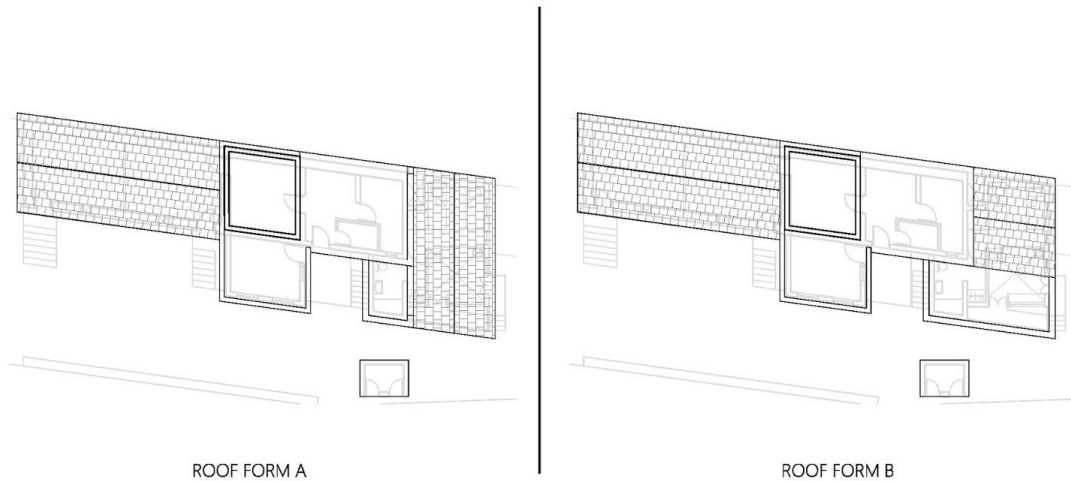


Plans aside, the real challenge presented by this site, as you may remember, is the lack of cohesion between the three phases of the dwelling. Volumetrically and elevationally, it is the burden of the home-stay to stitch and glue together this rather patchy and fragmented structure.

Unfortunately the obvious roof form that would meld with the interior volume of the home-stay (single pitch rising from South to North) does not do much for the dwelling as a whole. We have two other possibilities for the roof form, illustrated below.

One proposal (Roof Form B), as discussed during the workshop, was to continue the pitch and form of the traditional Bakhli roof. This however may not be elevationally strong enough, when interrupted by the projecting volume of the living room.

An alternative (Roof Form A) is to continue the the Bakhli's roof form, but rotated. This is because the Bakhli's width (14.1ft) is almost the same as the home-stay's length.



Roof Form A was evolved to fit Rev4. An indicative 3D illustration of the resulting combination of a double-pitch and flat roof (Roof Form C) is shared below. The flat roof of the home-stay becomes an extension of the existing adjacent flat roof over the hosts'

